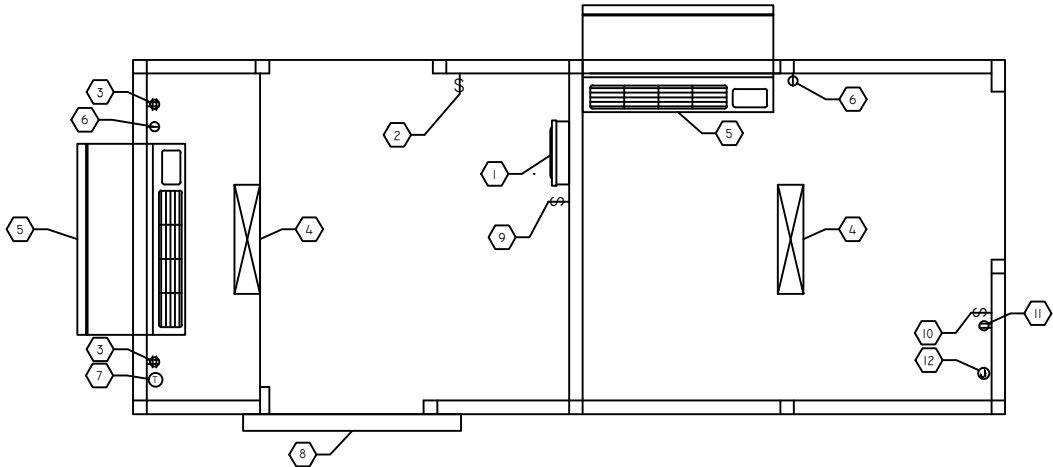


PLAN VIEW

DESIGN NOTES

- SWING ENTRY DOOR TO PROVIDE 32" CLEAR DOOR OPENING AND INCLUDES: LEVER HANDLE LOCKSET, HYDRAULIC CLOSER, FIXED GLASS IN UPPER PORTION OF DOOR AND WEATHER STRIPPING.
- REST ROOM ENTRY DOOR TO PROVIDE 32" CLEAR DOOR OPENING AND INCLUDES: LEVER HANDLE LOCKSET, HYDRAULIC CLOSER, AND WEATHER STRIPPING.
- SLIDING TRANSACTION DOOR INCLUDES: HOOK BOLT LOCK EXTERIOR KEYPED CYLINDER AND INTERIOR THUMB TURN, PENDANT MOUNTED TOP TRACK AND GUIDES, FIX GLASS IN UPPER PORTION OF DOOR AND WEATHER STRIPPING.
- DUTCH SERVICE DOOR INCLUDES: HINGES AND LATCH.



ELECTRICAL PLAN

ELECTRICAL NOTES

- 120/208 VOLT, SINGLE PHASE, 125 AMP RATED, MINIMUM 8-CIRCUIT LOAD CENTER.
- LIGHT SWITCH FOR INTERIOR OFFICE LIGHT.
- 120 VOLT, 20 AMP DOUBLE DUPLEX RECEPTACLES, TWO REQUIRED.
- CEILING SURFACE MOUNTED, FLUORESCENT LIGHT FIXTURE.
- WALL MOUNTED HEAT PUMP UNIT (208 VOLT, 9,200 BTU COOL/8,100 BTU HEAT). WITH RELIABLE IMPACT RESISTANT LOUVER, TWO REQUIRED.
- 208 VOLT, 20 AMP SINGLE RECEPTACLE FOR HEAT PUMP UNIT.
- WALL MOUNTED THERMOSTAT CONTROL FOR OFFICE HEAT PUMP UNIT.
- EXTERIOR, DROP DISH, FLUORESCENT LIGHT FIXTURE MOUNTED TO EXTERIOR WALL WITH PHOTOCELL CONTROL.
- LIGHT SWITCH FOR MANUAL OFF OF #8 EXTERIOR WALL MOUNTED LIGHT.
- LIGHT SWITCH FOR REST ROOM LIGHT.
- GFCI DUPLEX RECEPTACLE.
- SINGLE GANG JUNCTION BOX LOCATED 6" ABOVE FLOOR WITH A DEDICATED 1/2" EMT CONDUIT RUN TO LOAD CENTER FOR FUTURE POWER SUPPLY OF WATER HEATER. WIRING AND CONNECTION BY OTHERS.

NOTE ACTUAL LOCATION OF ELECTRICAL DEVICE MAY VARY DUE TO INSTALLATION CONSTRAINTS OR FOR PROPER PLACEMENT AS PER APPLICABLE CODES

FINISH SCHEDULE	
ITEM	DESCRIPTION
FLOOR	ALUMINUM TREAD PLATE
INTERIOR WALLS	WHITE
EXTERIOR	WHITE
CEILING	WHITE
COUNTER	304 STAINLESS STEEL
GLAZING	INSULATED LOW-E WITH IMPACT RESISTANT GLASS

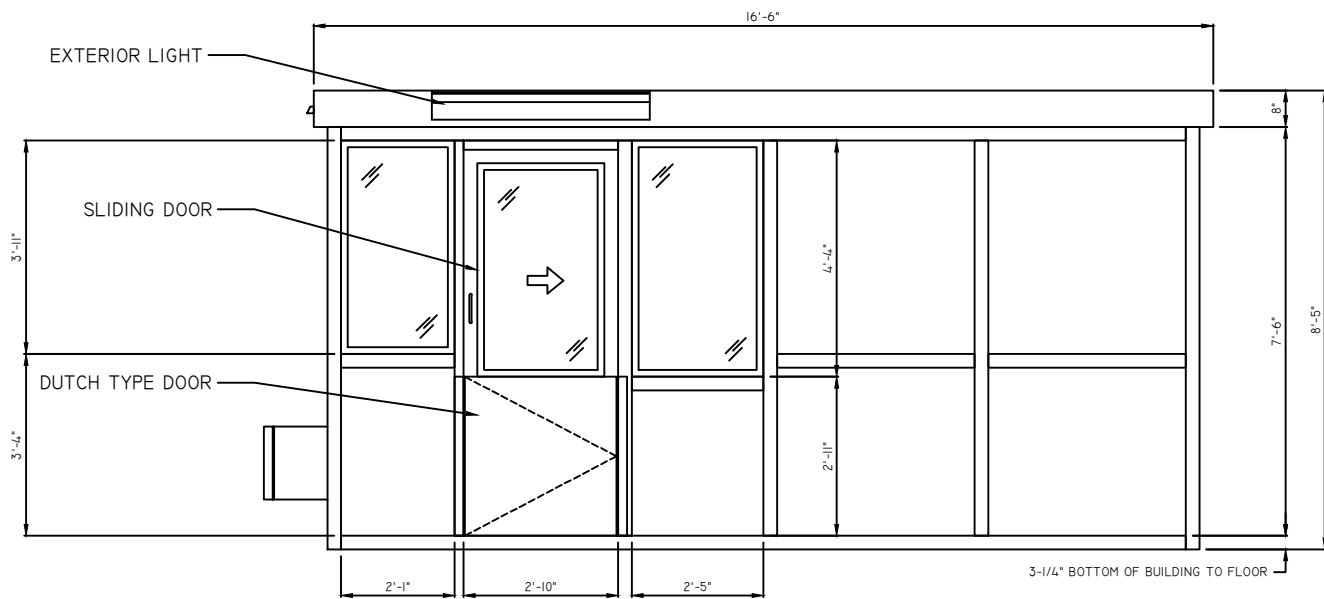
MODEL NUMBER	APPROVED BY:	
MFI-6616-BI		
DATE: 5-27-2016	SERIAL NUMBER(S)	DRAWN BY: DNE
SCALE: NTS	VI4-034	REVISION: .
PORT EVERGLADES		
	MARDAN FABRICATION, INC.	
	WWW.MARDANFAB.COM	
	800-882-5820	DRAWING SHEET
		SD-I

ACCESSIBILITY NOTES:

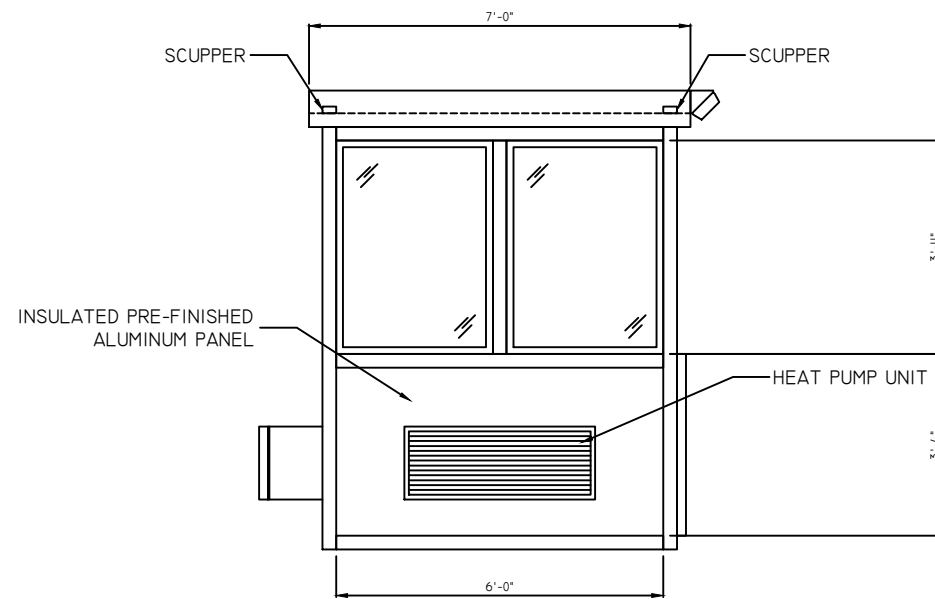
BOOTH MUST BE HANDICAP ACCESSIBLE RAMP OR FOUNDATION PROVIDE BY OTHERS.

THE FOUNDATION MAY BE RECESSED OR A 1:12 RAMP MUST BE PROVIDED SO THAT MAXIMUM CHANGE IN LEVEL FROM GRADE TO FINISH FLOOR DOES NOT EXCEED 1/4".

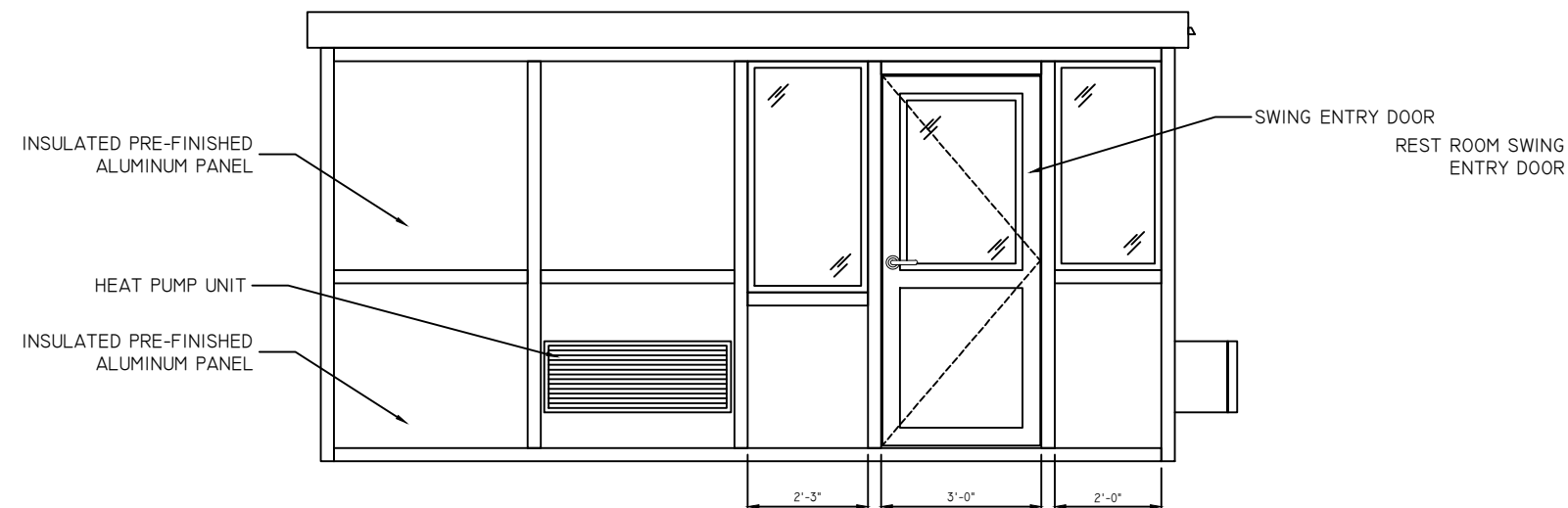
REVIEW IN CONJUNCTION WITH THE APPLICABLE ACCESSIBILITY CODE FOR MORE DETAILED INFORMATION AND REQUIREMENTS.



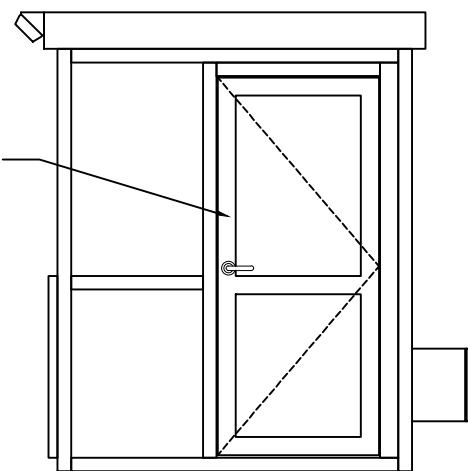
ELEVATION A




ELEVATION B

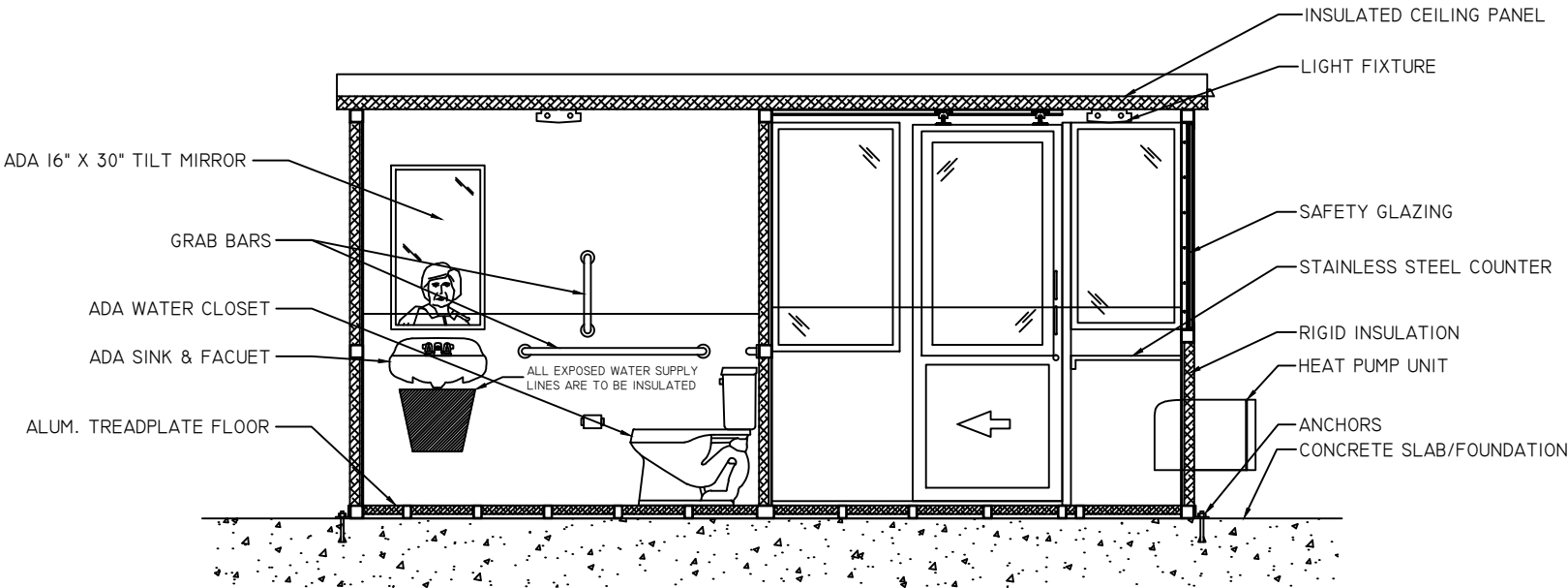


ELEVATION C

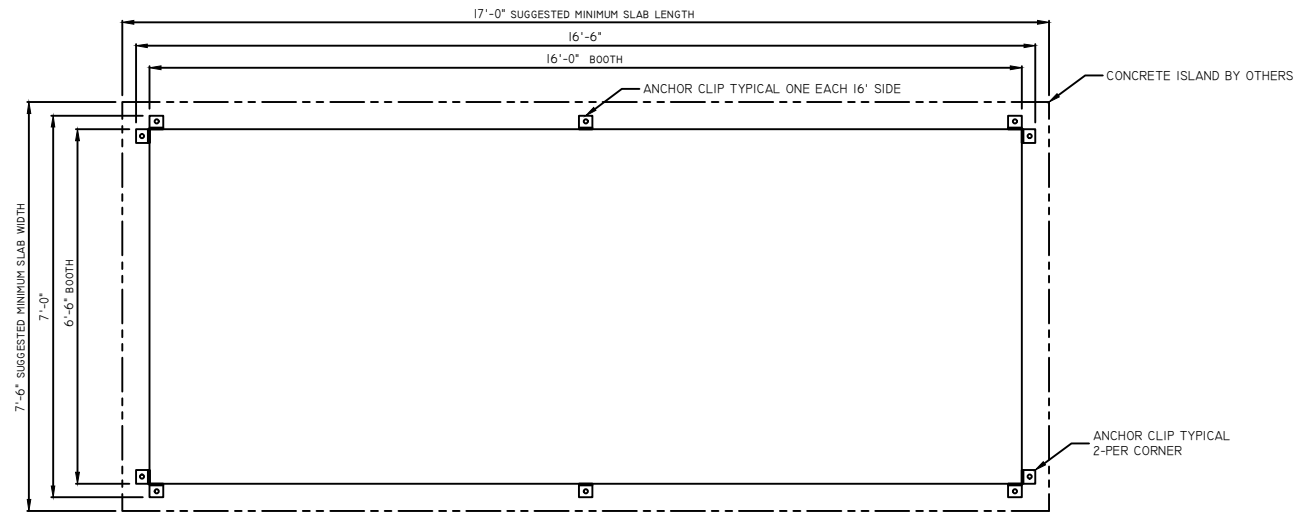


ELEVATION D

MODEL NUMBER MFI-6616-BI	APPROVED BY:	
DATE: 5-27-2016	SERIAL NUMBER(S) VI4-034	DRAWN BY: DNE
SCALE: NTS		REVISION: .
PORT EVERGLADES		
 MARDAN FABRICATION, INC. WWW.MARDANFAB.COM 800-882-5820		DRAWING SHEET SD-2



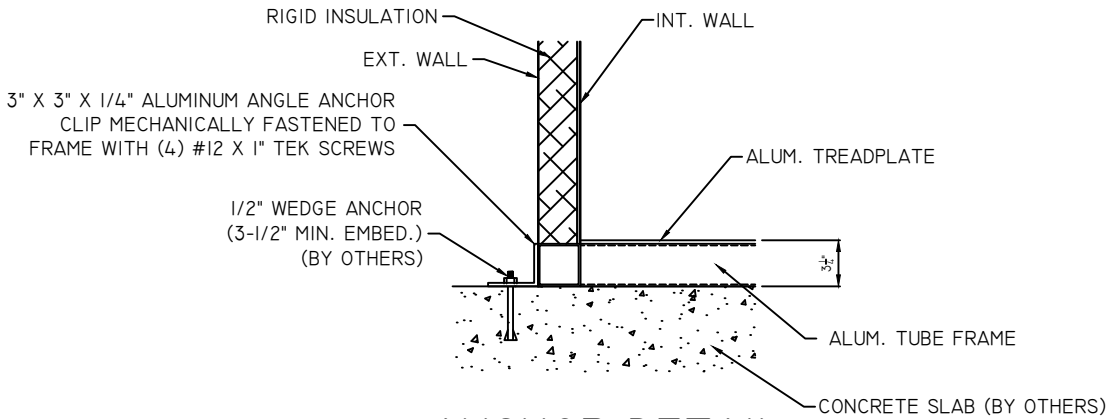
SECTION



FOOTPRINT

GENERAL SITE INSTALLED ITEMS PROVIDED BY OTHERS

1. PROVIDE 120V/240V, SINGLE PHASE, 3-WIRE SERVICE WITH GROUND.
2. CONCRETE FOUNDATION/SLAB MINIMUM 6" DEEP, 3,000 PSI MINIMUM (28 DAY ACI 318). THE MINIMUM FOUNDATION/SLAB SHOULD BE AS DIMENSIONED ABOVE. THIS IS TO PROVIDE AN AMPLE CONCRETE BORDER ON EACH SIDE OF THE BUILDING AND TO PREVENT FRACTURING OF CONCRETE WHEN ANCHORING.
3. ADEQUATE SIZE DRILLED ANCHOR BOLTS. SUGGESTED SIZE: 1/2" WEDGE ANCHOR (3-1/2" MINIMUM EMBEDMENT INTO CONCRETE SLAB/FOUNDATION).



ANCHOR DETAIL

ANCHORS LOCATED PER PROJECT DRAWINGS.
MINIMUM OF EIGHT (8) ANCHORS REQUIRED
PER BOOTH.

CONCRETE FOUNDATION/SLAB BY OTHERS
DESIGN IS BASED ON A MINIMUM 6" DEEP, 3,000 PSI MINIMUM (28 DAY ACI 318) REINFORCED. THE FOUNDATION/SLAB SHOULD BE A MINIMUM OF 12" WIDER THAN THE BUILDING FOOT PRINT DIMENSIONS. THIS IS TO PROVIDE A 6" CONCRETE BORDER ON EACH SIDE OF THE BUILDING.

FACTORY SUPPLIED ITEMS SHIPPED LOOSE FOR INSTALLATION ON SITE BY OTHER IN COMPLIANCE WITH ANY AND ALL APPLICABLE CODES: WATER CLOSET, LAVATORY WITH FAUCET, WATER HEATER AND TILT MIRROR.

FACTORY INSTALLED ITEMS INCLUDE: GRAB BARS, COAT HOOK, TOILET PAPER DISPENSER PAPER TOWEL DISPENSER AND SOAP DISPENSER.

WATER HEATER AND HOT WATER SUPPLY IS INSTALLED BY OTHERS. THE FACTORY PROVISION PROVIDED FOR WATER HEATING EQUIPMENT IS LIMITED TO POWER JUNCTION BOX WITH RACEWAY TO LOAD CENTER. WIRING AND ELECTRICAL CONNECTION SUBJECT TO LOCAL INSPECTION.

ALL PLUMBING PIPING AND INSTALLATION OF ITEMS LISTED ABOVE ARE BY OTHERS AND IS SUBJECT TO SITE INSPECTION AND NOT PART OF THIS MODULAR BUILDINGS DESIGN.

MODEL NUMBER MFI-6616-BI	APPROVED BY:	
DATE: 5-27-2016	SERIAL NUMBER(S) VI4-034	DRAWN BY: DNE
SCALE: NTS		REVISION: .
PORT EVERGLADES		
MARDAN FABRICATION, INC. WWW.MARDANFAB.COM 800-882-5820		DRAWING SHEET SD-3