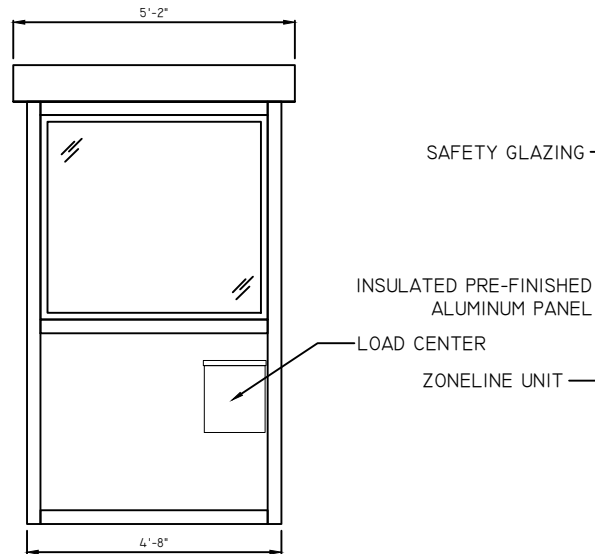
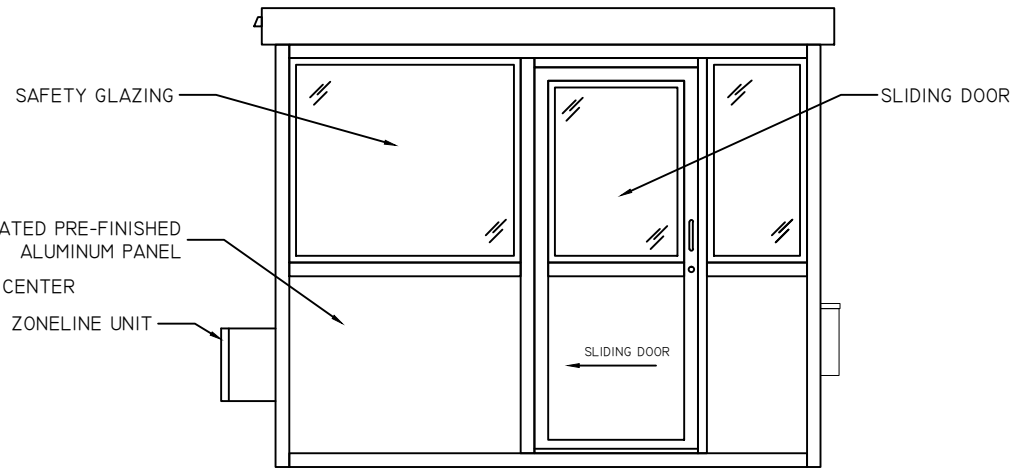


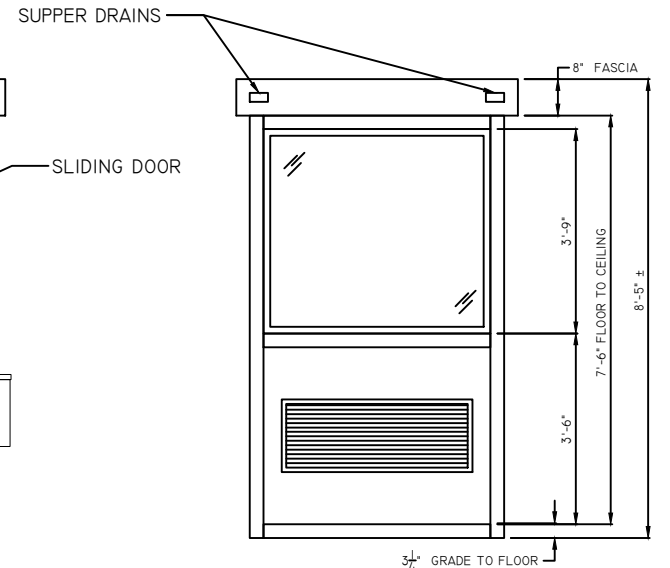
ELEVATION "A"



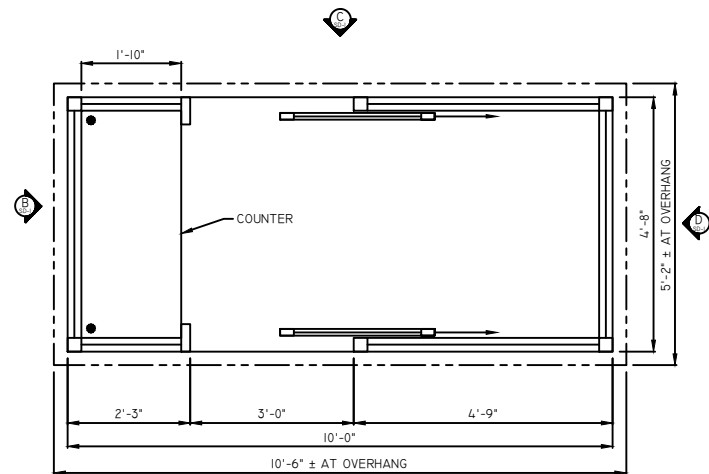
ELEVATION "B"



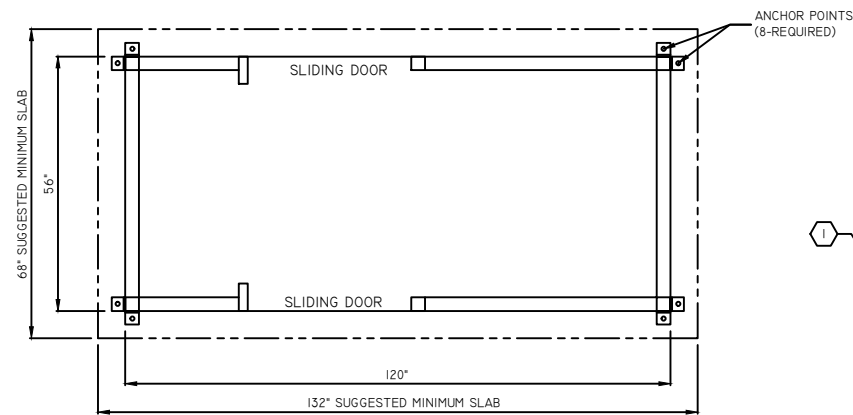
ELEVATION "C"



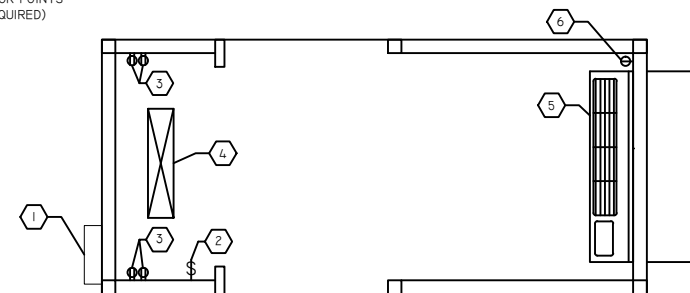
ELEVATION "D"



PLAN VIEW



FOOT PRINT



ELECTRICAL PLAN

ELECTRICAL NOTES

1. RAIN TIGHT 120V/240 VOLT, SINGLE PHASE, 125 AMP RATED, 8-CIRCUIT LOAD CENTER.
2. LIGHT SWITCH FOR INTERIOR LIGHT.
3. 120 VOLT, 20 AMP DOUBLE DUPLEX RECEPTACLES, TWO REQUIRED.
4. CEILING SURFACE MOUNTED FLUORESCENT LIGHT FIXTURE.
5. WALL MOUNTED ZONELINE HEATPUMP UNIT (240 VOLT, 11,800 BTU).
6. 240 VOLT, 20 AMP SINGLE RECEPTACLE FOR ZONELINE UNIT.

NOTE: ACTUAL LOCATION OF ELECTRICAL DEVICE MAY VARY DUE TO MEETING CODE REQUIREMENTS AND PLACEMENT WITHIN THE STRUCTURE.

GENERAL SITE INSTALLED ITEMS PROVIDED BY OTHERS

1. PROVIDE 120V/240V, SINGLE PHASE, 3-WIRE SERVICE WITH GROUND.
2. CONCRETE FOUNDATION/SLAB MINIMUM 6" DEEP, 3,000 PSI MINIMUM (28 DAY ACI 318). THE MINIMUM FOUNDATION/SLAB SHOULD BE AS DIMENSIONED ABOVE. THIS IS TO PROVIDE AN AMPLE CONCRETE BORDER ON EACH SIDE OF THE BUILDING AND TO PREVENT FRACTURING OF CONCRETE WHEN ANCHORING.
3. ADEQUATE SIZE DRILLED ANCHOR BOLTS. SUGGESTED SIZE: 1/2" WEDGE ANCHOR (3-1/2" MINIMUM EMBEDMENT INTO CONCRETE SLAB/FOUNDATION).

EQUIPMENT

- A. COUNTER WITH TWO- 2" GROMMET HOLES.
- B. SLIDING DOOR, FULLY WEATHER-STRIPPED WITH HOOK BOLT LOCKSET, BALL BEARING HANGERS, ALUMINUM TRACK WITH FIXED GLASS WINDOW, UPPER HALF.

FINISH SCHEDULE

ITEM	DESCRIPTION
FLOOR	ALUMINUM TREADPLATE
BUILDING	COASTAL BEIGE #1641
CANOPY (SOFFIT/FASCIA)	TILE RED #P6186
CEILING	WHITE
COUNTER	WHITE PLASTIC LAMINATE
GLAZING	INSULATED, LOW-E SAFETY GLASS

VI5-04.3

MODEL NUMBER MFI-48100-SL2	APPROVED BY:	
DATE: 6/3/2016	DRAWING NUMBER VI5-043	DRAWN BY: .
SCALE: NTS		REVISION: .
MANHEIM AUTO AUCTION LAKELAND, FL		
MARDAN FABRICATION, INC. WWW.MARDANFAB.COM 800-882-5820		DRAWING SHEET SD-I

NOTE: THIS DRAWING AND DESIGN ARE THE PROPERTY OF MARDAN FABRICATION, INC. (MFI) IT MUST NOT BE REPRODUCED IN ANY MANNER, NOR SHALL IT BE SUBMITTED TO OUTSIDE PARTIES FOR EXAMINATION WITHOUT OUR CONSENT. IT SHALL BE USED ONLY AS A MEANS OF REFERENCE TO WORK DESIGNED AND FURNISHED BY MARDAN. MARDAN RESERVES THE RIGHT TO MAKE CHANGES TO DESIGN FOR ENGINEERING PURPOSES WITHOUT NOTICE. REVISIONS MAY NOT BE NOTED.